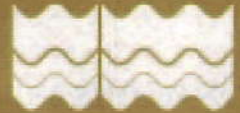


eastsussex.gov.uk
brighton-hove.gov.uk
southdowns.gov.uk

East Sussex
County Council



Draft Waste and Minerals Plan

Factsheet 3 | October 2011

Update

Our Revised Plan - we need your views before 8 December

We have now completed our review of the need for land fill and land raise and the alternatives that would reduce this need. This newsletter updates you on how this review has altered our approach to planning for waste & minerals, what is in the revised Waste & Minerals Plan and how you can give us your views.

The revised plan responds to the widespread concern about land disposal generally, and to comments on the specific areas of search for land disposal identified in our previous consultation. It also reflects the conclusions of the Government's Review of Waste Policy in England and the views of the waste industry as to what can be achieved.

All of these factors provide the evidence that we need to show our revised policies are workable and will stand up to scrutiny of the Government's Planning Inspectorate.

In developing the revised strategy, we have been guided by the need to:

- Minimise the amount of waste that needs to go to landfill or landraise
- Maximise the amount of waste that is re-used, recycled or that energy is recovered from
- Reduce the amount of waste that is produced
- Recognise that waste left over will need to be landfilled outside of East Sussex, South Downs and Brighton & Hove
- Provide more waste treatment facilities in the Plan area

The South Downs National Park Authority is now a partner to the Plan and any waste & minerals development in the National Park will need to take account of its special place in national policy.



The Problem

Why do we have a plan?

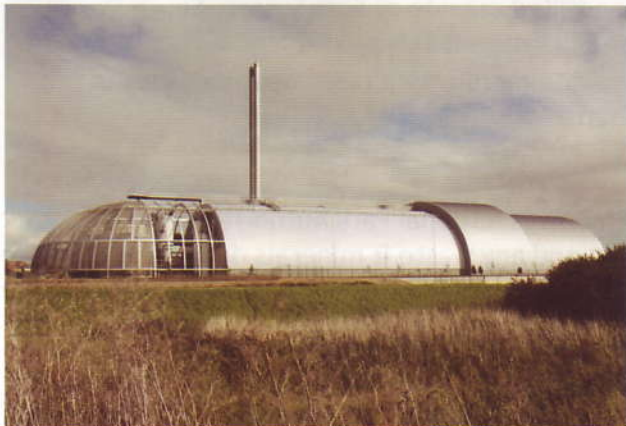
We have to develop a new plan for how we will deal with waste and minerals in East Sussex and Brighton & Hove, and those parts that lie within the South Downs National Park. This includes looking at how waste should be dealt with, what waste facilities are needed, where they might be located and whether important minerals should be extracted. We need to have a plan to make sure development happens in the most appropriate way.

What stage are we at in the plan?

The new plan will replace the existing Waste and Minerals Local Plans. We have already consulted on options for the plan and we are now publishing a draft revised plan and asking for comments.

What does the plan cover?

It covers planning for all types of waste: household (nearly one-fifth of the total), business and construction, as well as dealing with the main minerals of gravel, clay and gypsum.



Newhaven Energy Recovery Facility

How much waste can we recycle or recover?

Our recycling and energy recovery rates for household waste are going up and will be over 90% when the Newhaven energy recovery facility fully opens later this year. However, the public authorities are not responsible for treating or disposing of business waste and our main role is to encourage businesses to improve the way their waste is managed.

How do we ensure a steady supply of minerals?

We will support using recycled materials as alternative to quarrying as far as possible. High grade gravel is important to maintaining economic growth and the area will have to rely on extraction near Camber and marine-based sources.

How can we reduce or eliminate the need for land disposal?

The disposal of waste into or onto land is the last resort. But even after recycling and recovering energy from as much waste as possible, there is still an amount that will have to be disposed of to land. The worse-case forecasts are that up to 2026 the need could be around 2 million tonnes. It is predicted that the need will decline rapidly after 2015 once more facilities have been built so this is more of a short term problem.

A Changing Situation

Several factors have changed since our last public consultation in 2009:

a) Government policy

Government policy has a very important effect on how waste will be managed and a good example of this is the landfill tax. This taxes every tonne of waste sent to landfill or landraise sites. The landfill tax is currently £56 per tonne and will increase by £8 per tonne until it reaches £80 per tonne in 2014. The Government has also reviewed the National Waste Strategy and confirmed land disposal is a last resort.

b) The approach of the waste industry

The view of the waste industry is very important because our plan needs to work for everyone involved. The draft recycling and recovery targets in the previous plan reflected the views of the industry in 2008. At that time the industry felt that the targets we were proposing for alternatives to land disposal (eg recycling) were very ambitious and might not be achievable. But with the changes to landfill tax mentioned above, more recent discussions suggest that the financial viability of building recycling or recovery facilities as alternatives to land disposal has improved.

c) The operation of the waste market

Waste will now travel considerable distances to be treated or disposed of, vastly influenced by the availability of permitted facilities. The industry is also now investing in new technologies for dealing with waste.

The Solution: So what is the outcome of our work?

a) Reappraisal of land raise areas of search

We have investigated further the 5 primary areas of search for land raise in the Low Weald identified in the previous consultation. This review now indicates that there is no real opportunity to develop a land disposal site in these areas.

b) Reviewing existing allocations for landfill.

Ashdown Brickworks to the north-west of Bexhill is identified as a landfill site in the existing Waste Local Plan (2006), although no proposals have come forward from the waste industry. It is likely that the site could only be used if the Bexhill Hastings Link Road and other access roads are built.

If these go ahead the whole road connection to Ashdown Brickworks will not be available until well into the 2020s when it is anticipated that demand for land disposal will be at a low ebb. So it is not proposed to keep the site specific allocation in the Waste Local Plan.



Restoration of Beddingham Landfill in the South Downs National Park

c) Using landfill sites outside East Sussex, South Downs and Brighton & Hove

The previous consultation looked at sites within our own area only. These have been found not to be feasible. In reality, waste moves between areas within the South East and for this reason we have been taking a wider view. There are landfill sites elsewhere which could take our waste in the short term but other solutions are also needed.



Composting at the Woodlands Centre, Whitesmith

d) Preparing for more treatment sites

The plan identifies higher rates for recovering materials from waste. We also need to show that it could be possible to treat locally the equivalent amount of waste that will have to be exported out of the area. Sites for new facilities will be considered in a later document after the plan has been adopted but they are likely to be situated near main urban areas and adjoining the main transport links, and existing allocations in the Waste Local Plan will be retained at the present time..

e) Providing for minerals

Existing permissions to extract sand and gravel in the east and west of the county will be maintained in the plan. Continued production is supported at existing brickworks and supplies of clay will be safeguarded.

You can see a shortened version of the plan, the whole document and all the supporting studies on our website - see overleaf for further details

Tell Us Your Views

The consultation of the draft Plan will run between **27th October to 8th December 2011** and this is your chance to let us know what you think.

We would encourage you to view the whole Plan. You can see a shortened version of the Plan, the whole document and all the supporting studies at <http://consult.eastsussex.gov.uk/portal> or <http://www.eastsussex.gov.uk/mineralsandwaste>

Please send in your comments online as this will help make significant savings of resources and paper.

To submit comments online you will need to register at <http://consult.eastsussex.gov.uk>. Please contact us if you have any difficulty with the website.

Your comments may be made available to view by others, so please do not include any confidential information. We will only hold your name, address and contact details for use in future waste and minerals consultations.

Copies of all the main documents will also be available at your local Council offices. Copies of the consultation document will be available at main libraries across East Sussex and Brighton and Hove.

Contact us and send us your comments:

Via the website:

<http://consult.eastsussex.gov.uk>

By email:

wasteandmineralsdf@eastsussex.gov.uk

By post:

Economy, Transport & Environment, East Sussex County Council, C4 Waste and Minerals Policy (AP), FREEPOST (LW43), Lewes, BN7 1BR

By phone:

East Sussex County Council - 01273 481846

Brighton & Hove City Council - 01273 292505



This factsheet

We are distributing this factsheet door-to-door to people in rural areas near the original areas of search for landraise and to people near Ashdown Brickworks. This is the last factsheet we will distribute in this way. If you would like to keep up-to-date with the development of the Plan please register at <http://consult.eastsussex.gov.uk>.

You can get this factsheet in large print, on audio tape or in other languages - please contact us.